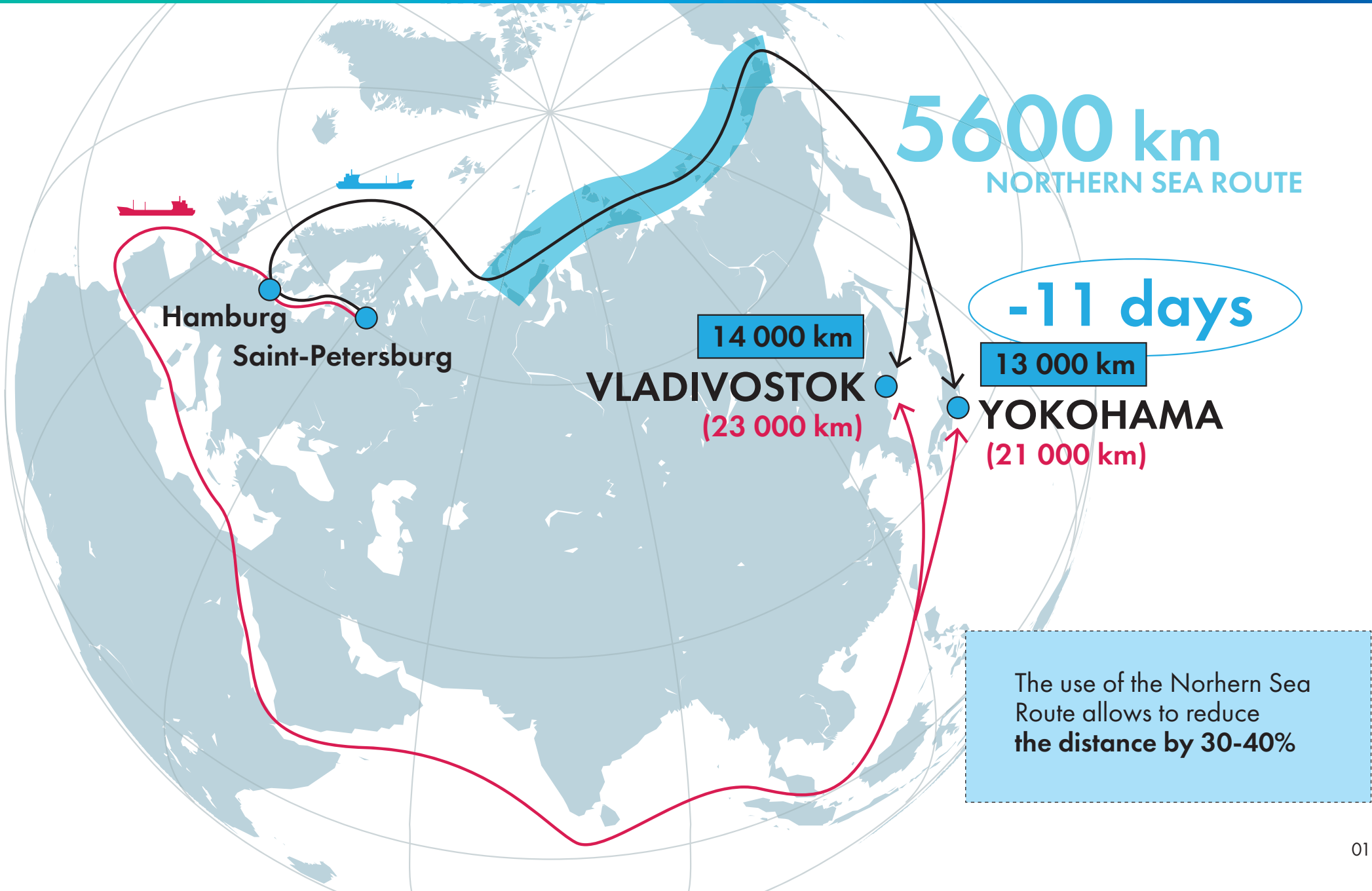




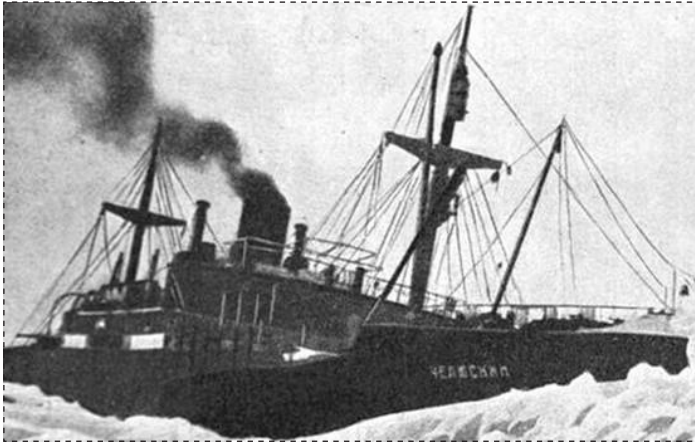
NORTHERN SEA ROUTE

2015



1932 – Northern Sea Route was passed during a single navigation by Shmidt expedition

1957 – launched the first nuclear icebreaker "Lenin"



«Sibiryakov»



«50 Years of Victory»



«Vaygach»



1959

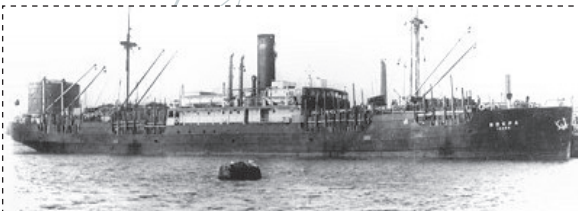
«Lenin»



«Taimyr»



«Yamal»



«Iskra»



«Vanzetti»

1938

Murmansk

Saint-Petersburg

1932

Arkhangelsk

Dudinka

1978

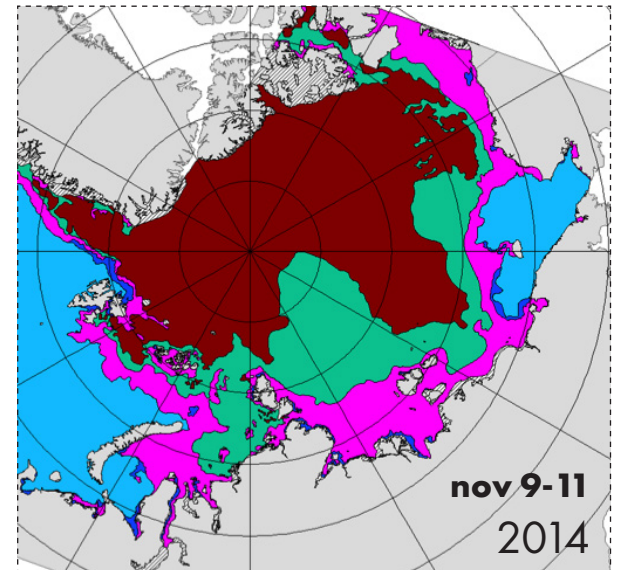
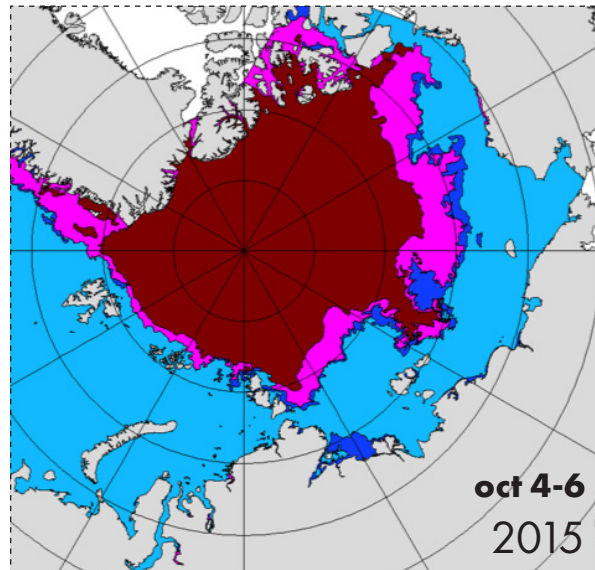
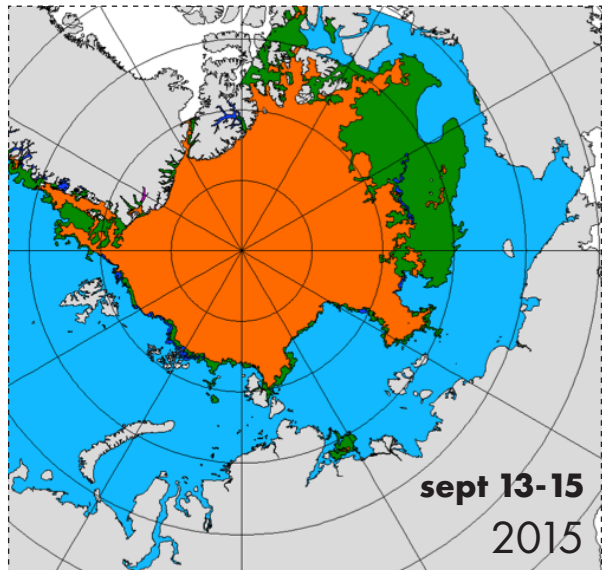
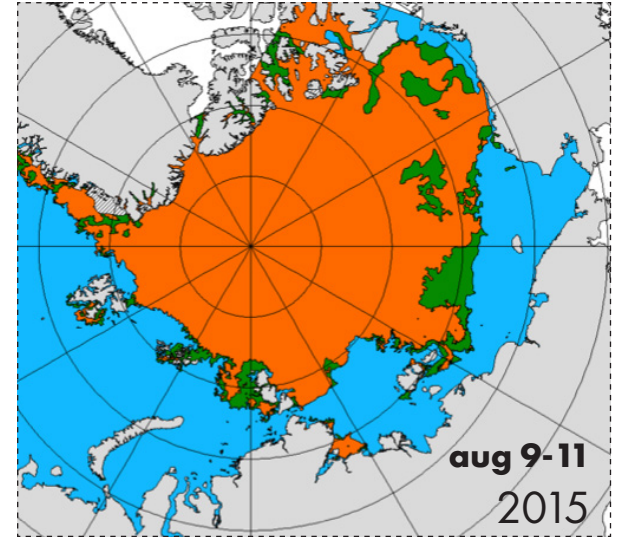
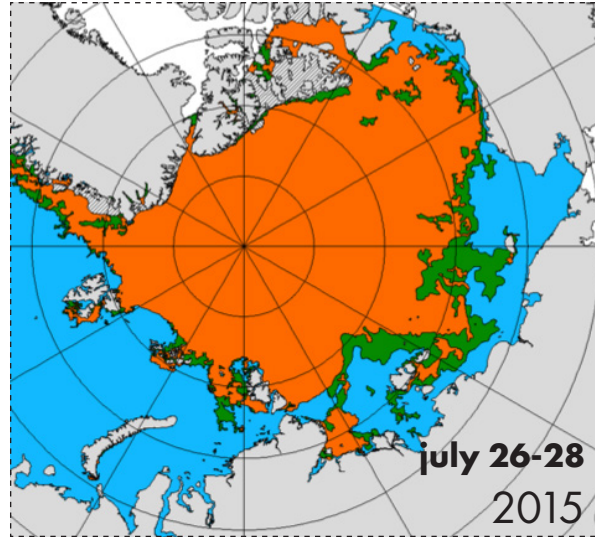
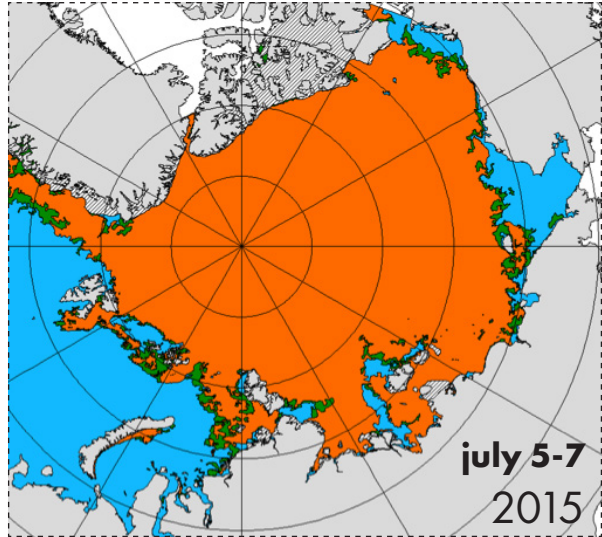
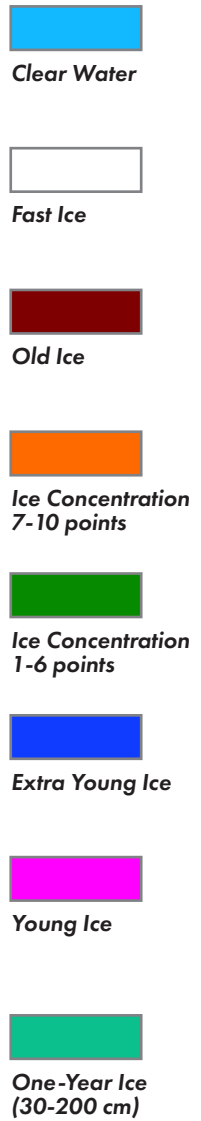
The route Murmansk – Dudinka was opened for year-round navigation

Vladivostok

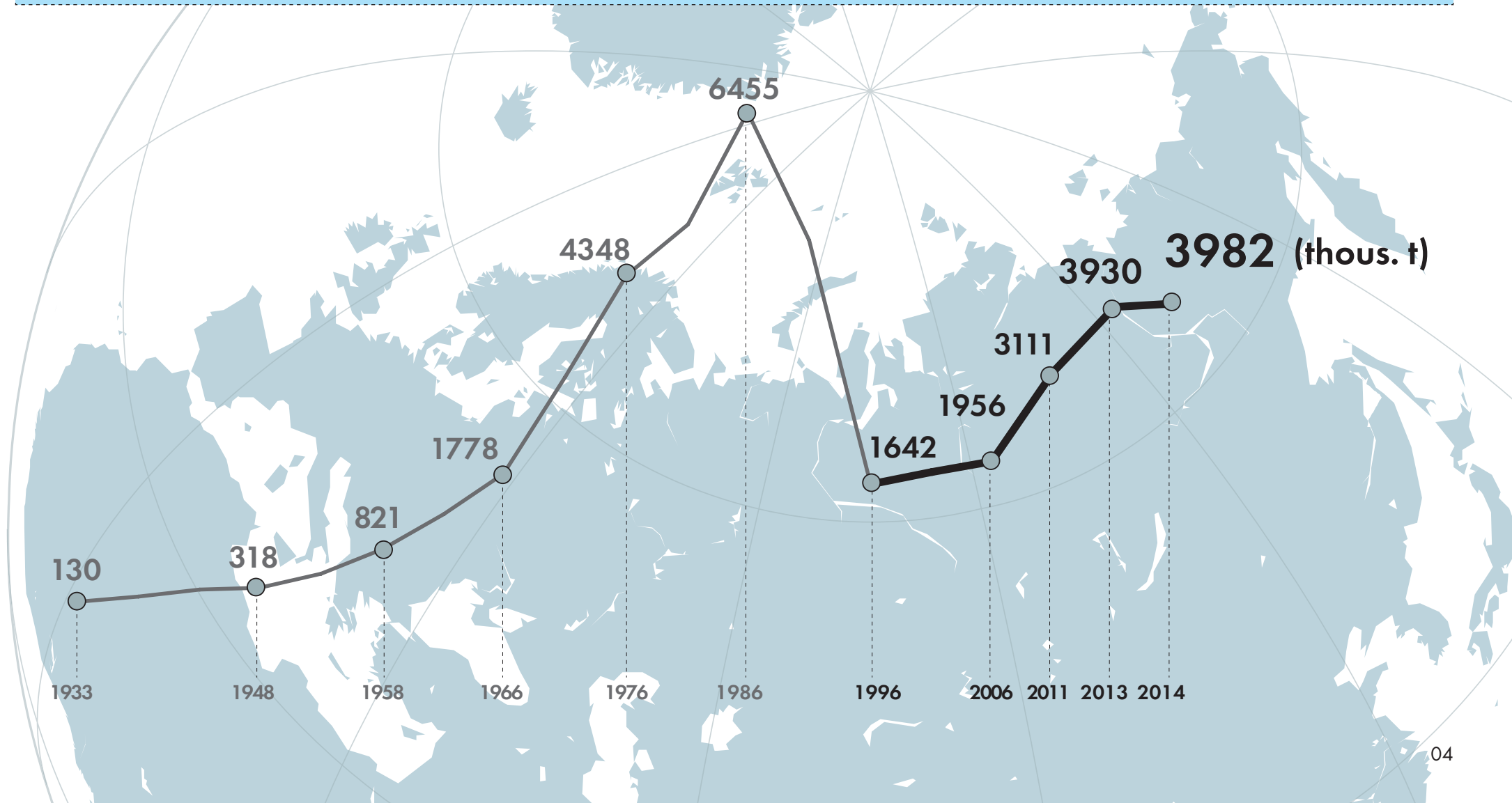


Universal Atomic Icebreaker Project 22220 (IB60)

ICE CONDITIONS



The cargo turnover of the Northern Sea Route has significantly increased in recent years
This is due to the restoration of transit volumes and the resumption of the supply shipments to arctic ports



2010 Murmansk – Ningbo voyage

New Siberian Islands

Murmansk

2011

600 thous. t
gas condensate

(9 tankers)

2012

487 thous. t
gas condensate

(8 tankers)

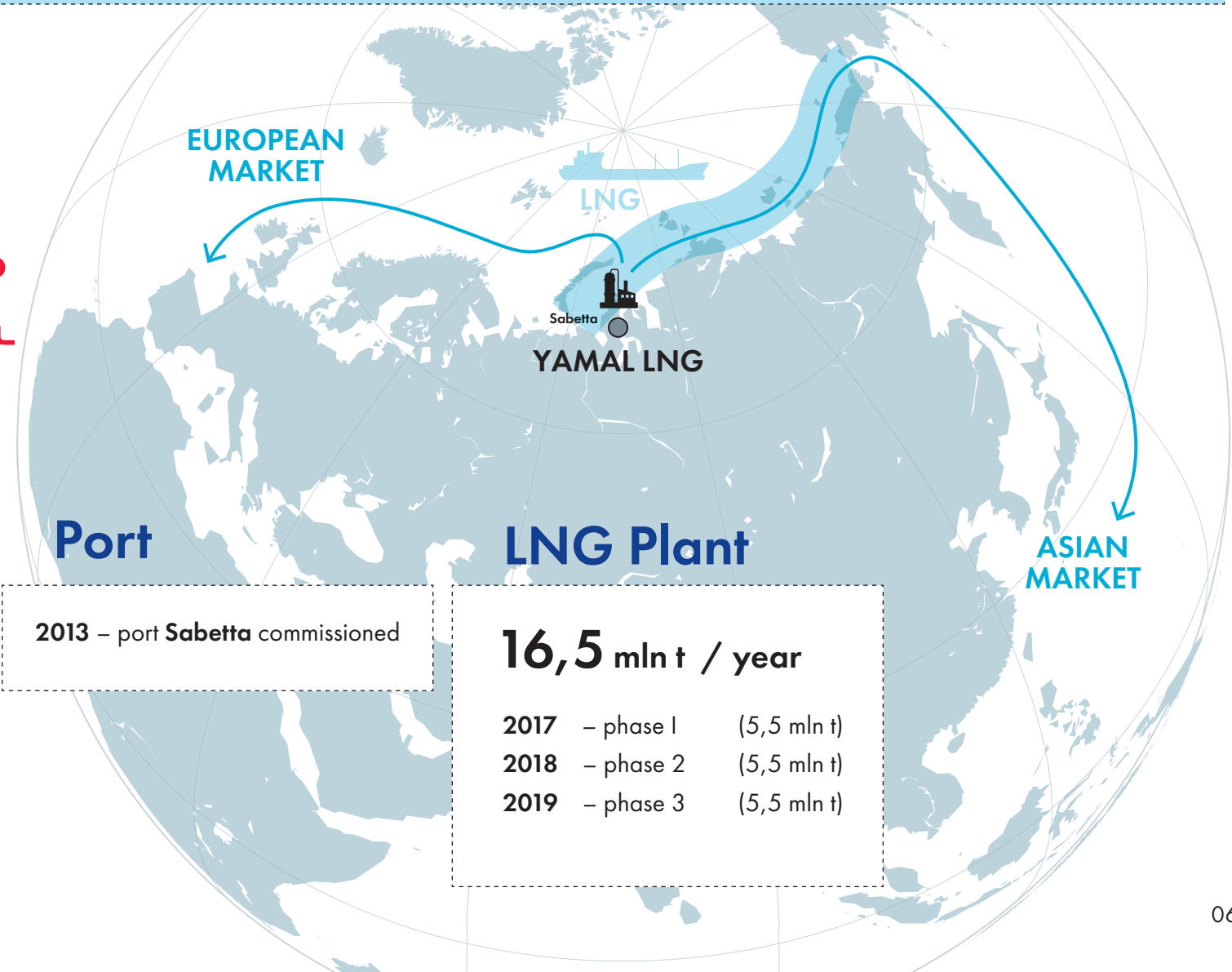
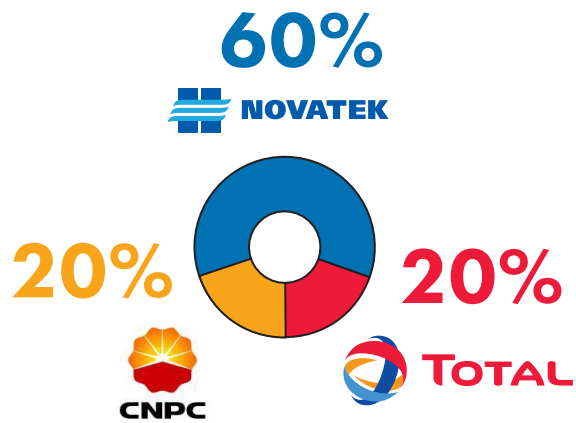
2013

120 thous. t
gas condensate

(2 tankers)

Ningbo

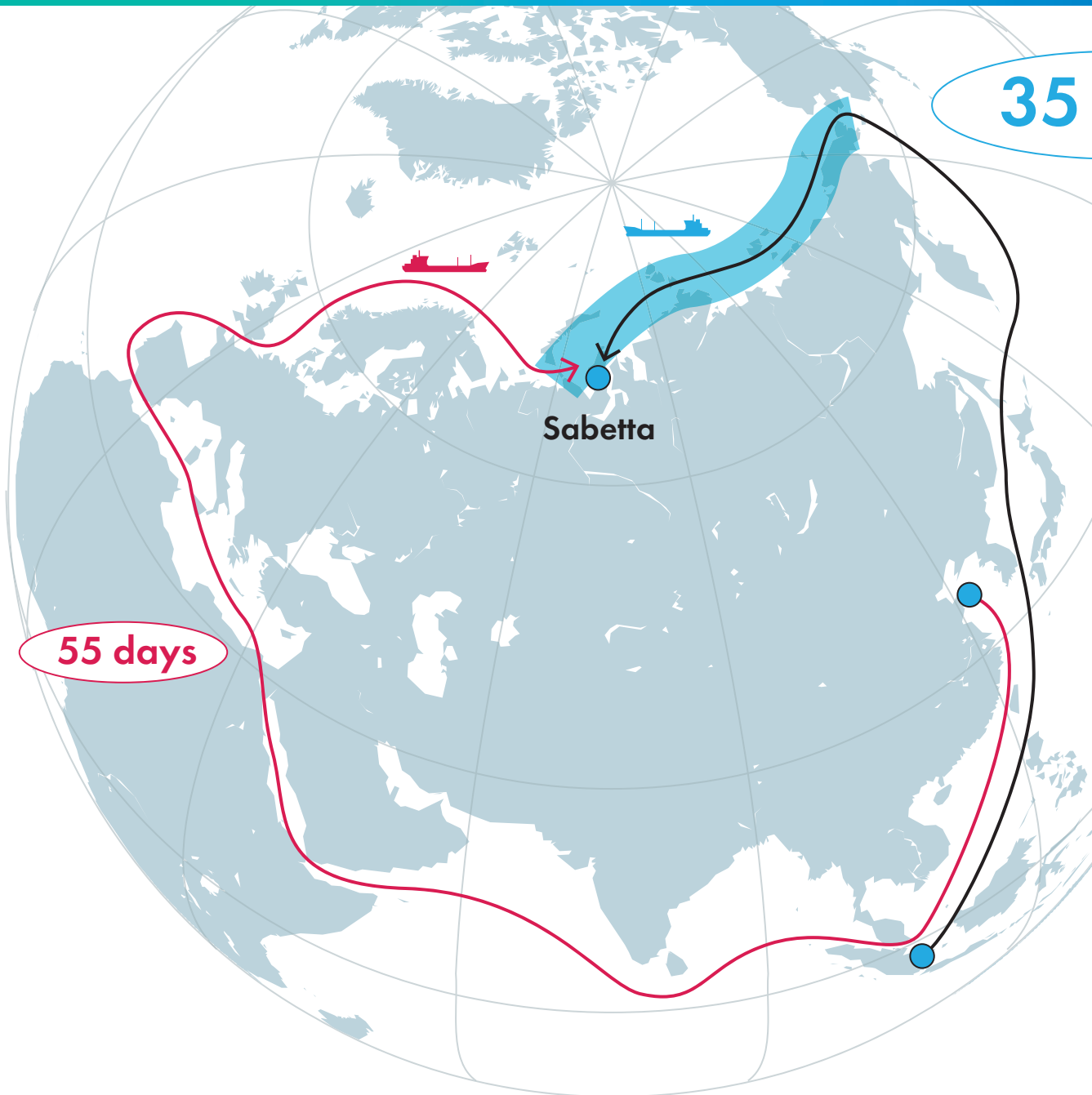
NOVATEK, TOTAL and CNPC are developing YAMAL LNG Project



2013 – port Sabetta commissioned

16,5 mln t / year

2017	– phase 1	(5,5 mln t)
2018	– phase 2	(5,5 mln t)
2019	– phase 3	(5,5 mln t)

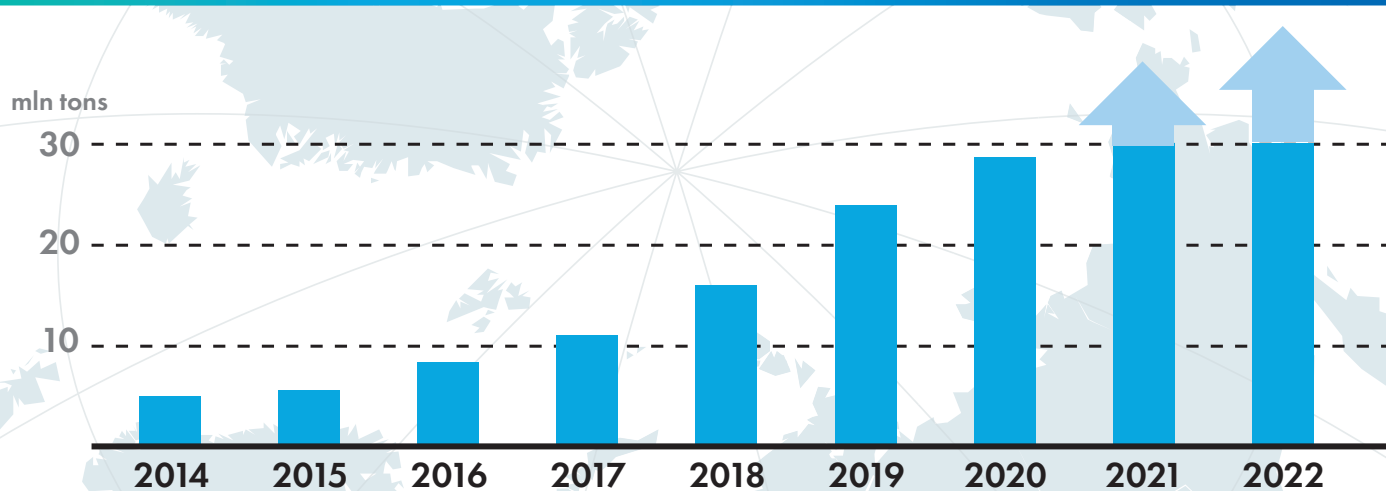
**35 days**

The modules for the LNG Plant were shipped by the Northern Sea Route

Novatek resources in region
let to increase the LNG and condensate
production capacity up to

35 mln t /year

15 Arc7 LNG carriers
will be used by the project



Rosneft

Operations on Licensed Areas

operations of shelf deposits survey

Till 2023

Yamal LNG

(port Sabetta)

18 mln tons LNG and condensate

2018 – 2040

GazpromNeft

Novoport Oil Deposit (Noviy Port)

8,5 mln tons crude oil

2015 – 2035

Norilsk Nickel

(port Dudinka)

1,3 mln tons nonferrous & precious metals

2018 – 2030

JSC Independent Oil and Gaz Company

Payaha Oil Deposit

3 mln tons crude oil

Constant