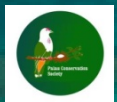




National NGOs and their role in delivering sustainable coastal management outcomes in Small Island Societies: the Palau Conservation Society story



Umai Basilius
Palau Conservation Society



ASIA

Philippines

Palau

Marshall Islands

Micronesia

Papua New Guinea

Nauru

Tuvalu

Kiribati

Pacific Ocean

0°

EQUATOR

East Timor

Indonesia

Solomon Islands

Vanuatu

Fiji

Samoa

Tonga

Tahiti (France)

TROPIC OF CAPRICORN

Australia

Sydney

23.5°

OCEANIA

New Zealand

Tasmania (Australia)

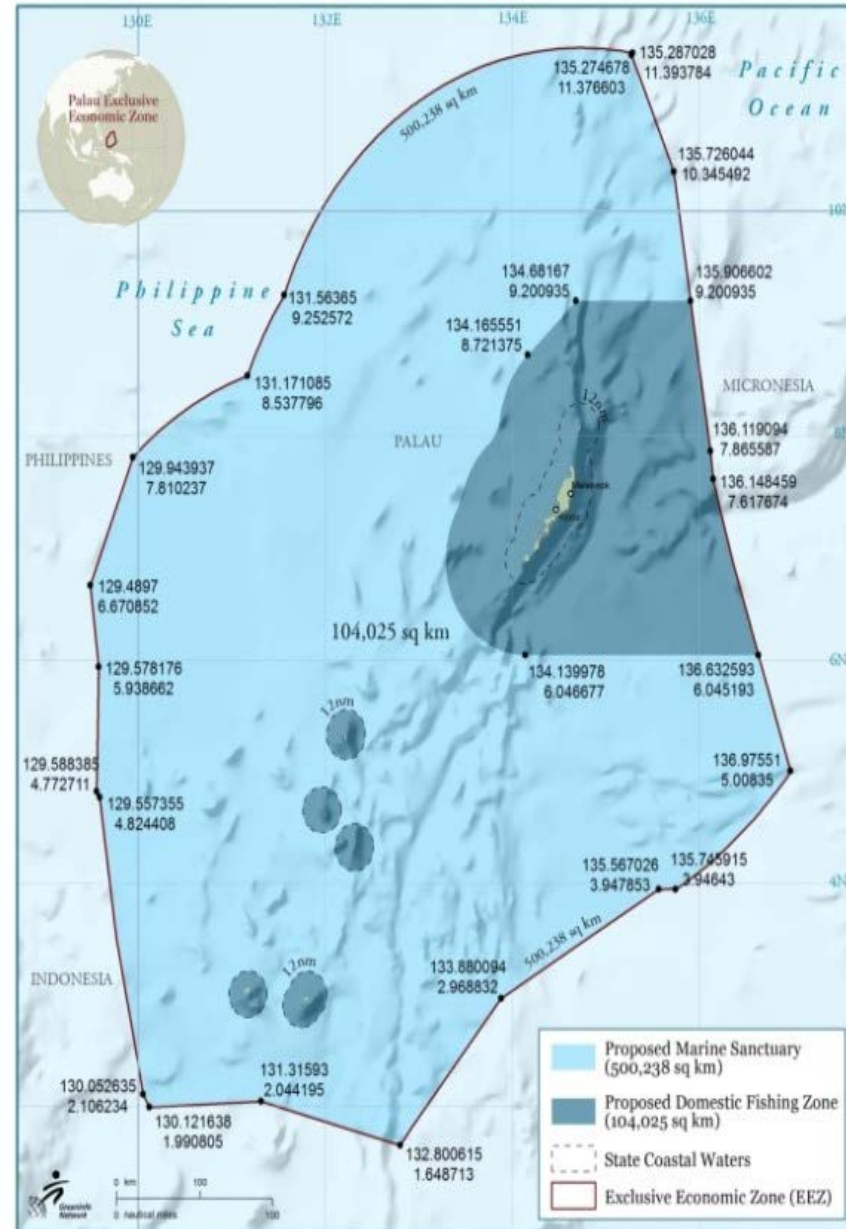
Indian Ocean

180°



- Population– 17,943 (2016)
- total land area– 458 km²
- Main industry is tourism
- Palau is a Big Ocean State (BOS)
- 80% of its EEZ (500,238 sq. km.) is a “no take zone”
- Remaining 20% is its domestic fishing zone (85,896 sq. Km.)
- 875.84 km² of nearshore waters is managed marine area or MPA.
- 19 MPAs in the Palau Protected Areas Network

Republic of Palau





Palau's Oceanic and Coastal Marine Resources drives our Economy , strengthens our society and enriches our culture.

Country efforts to manage the health of coastal resources are guided by a number of frameworks including:



- **Sustainable Land Management Policy**– Ensures that land resources (soils, plants animals etc.) are sustainably used to meet the needs of Palauans today without compromising their long term potential.
- **Water Policy**– Protects and conserves Palau’s water resources, including access to safe drinking water, affordable, sustainable water supply and wastewater services, and ensure that these services are managed and operated sustainably and effectively
- **Marine Protection Act (1994)**– Protects and promotes sustainable use of all species of marine animals and plants. It also regulates commercial fisheries through various restrictions on fishing such as prohibition of fishing for certain species outside prescribed seasons and gear restrictions.
- **National Biodiversity Strategies and Action Plan (NBSAP)**– Strategies that outline the conservation and sustainable use of biological diversity
- **The Palau Protected Areas Network**– a system of marine and terrestrial protected areas designed to conserve key habitats and species

The implementation of Palau's SLM policy is led by the Ministry of Natural Resources, Environment and Tourism





Vision= **Healthy Ecosystems for a Healthy Palau**

- Community-based organization that implements conservation activities through partnerships
- Respect for the Palauan culture and the science of conservation underpins our work
- Maintain and perpetuate the Palauan conservation ethic to existing generations and beyond

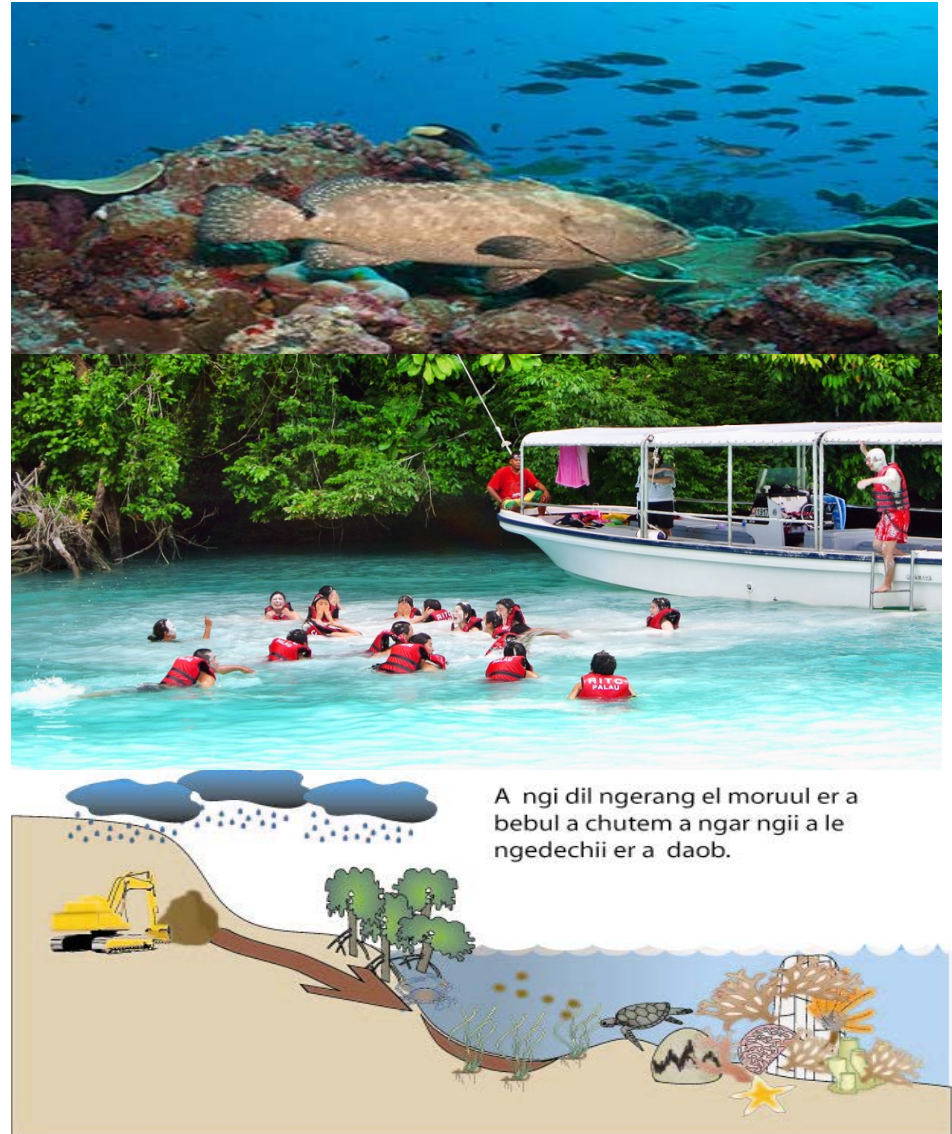


Current Strategic Plan Focus

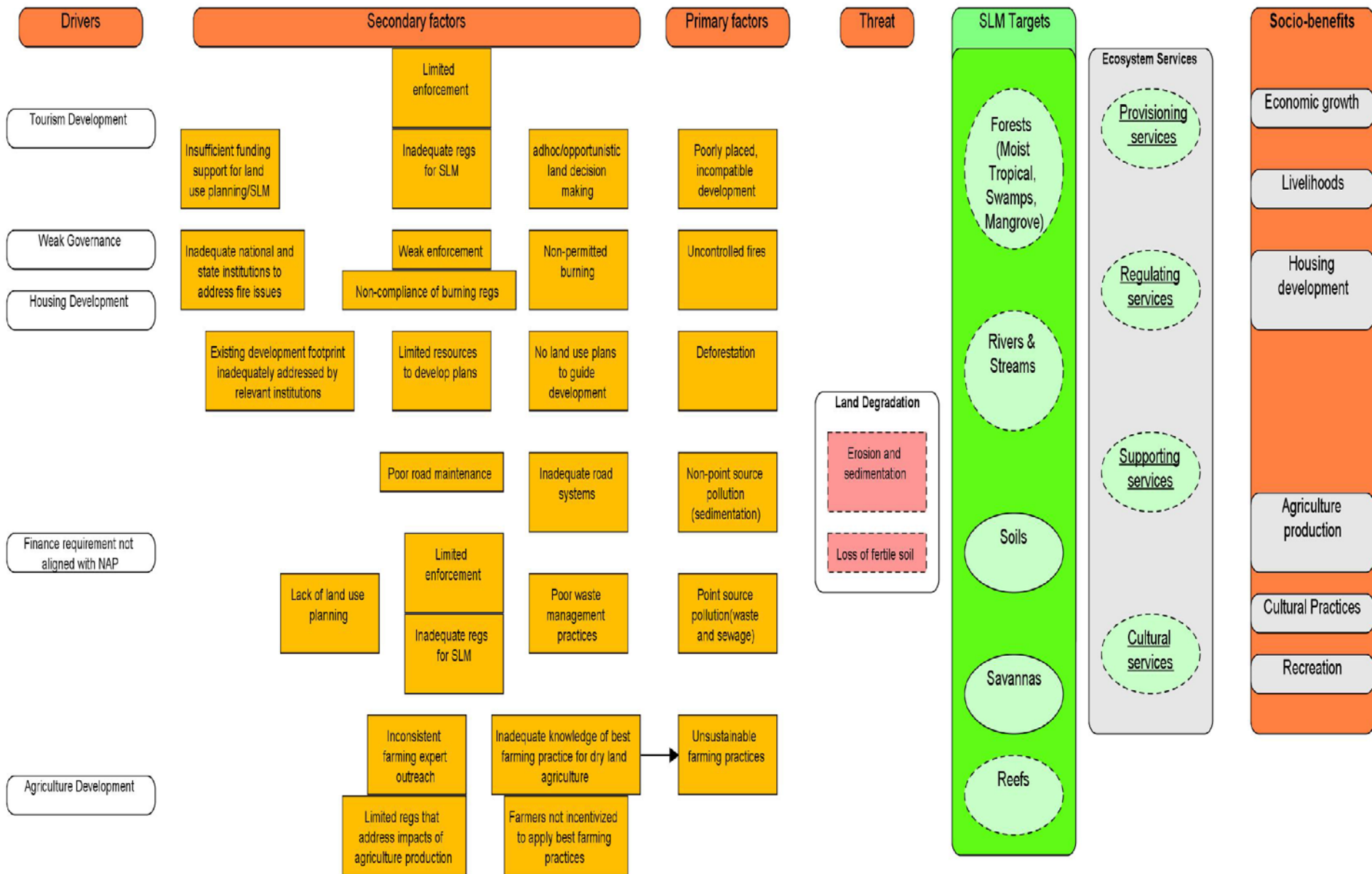
Stop Coastal
Overfishing

Reduce and Mitigate
Tourism footprint on
the environment

Reduce Coral Reef
degradation from land-
based activities (via SLM
efforts)



Sustainable Land Management situation Analysis



SLM Targets= Healthy forests, fresh water systems, agriculture lands and coral Reefs

Threats to these targets = Erosion and sedimentation and loss of soil fertility

Primary factors to threats= non point source pollution, fires, unsustainable farming practices and incompatibly sited development

Secondary factors to threats= Weak Institutional capabilities (insufficient regulations, weak enforcement, limited capacities)

Drivers of threats– Development pressure, weak governance

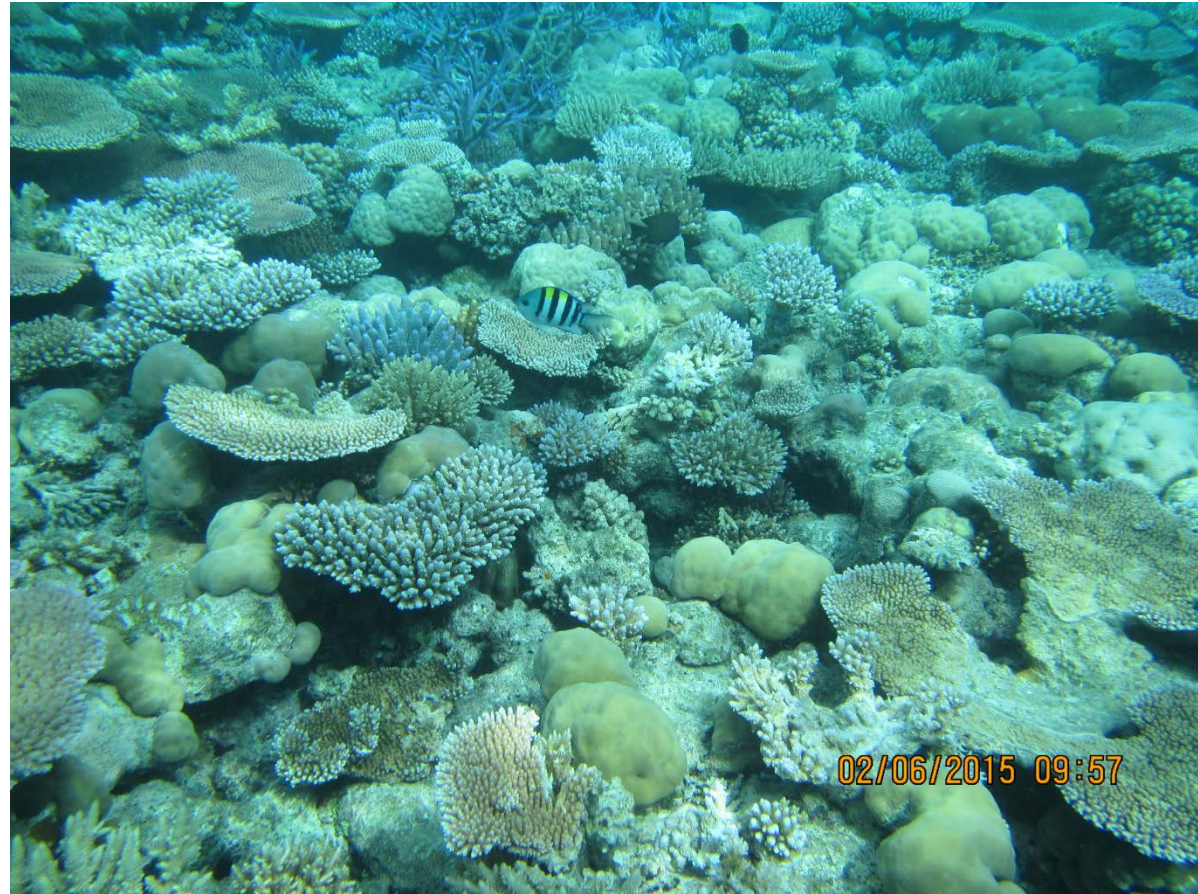


SLM Target (Coral Reefs)

Palau's reefs underpin the country's tourism sector and provide fish and seafood for sustainable and commercial use.

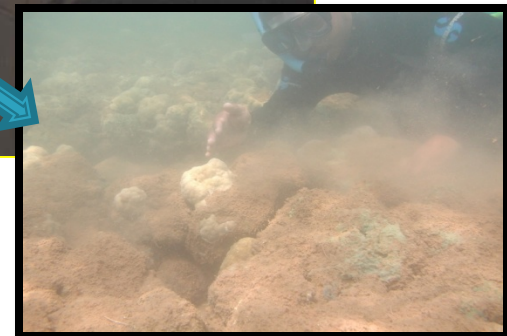
Coral Reefs need additional protection.

2017 Palau State of the Environment Report.



Ridge to Reef

Island Ecosystems are connected, what you do on land impacts the reefs



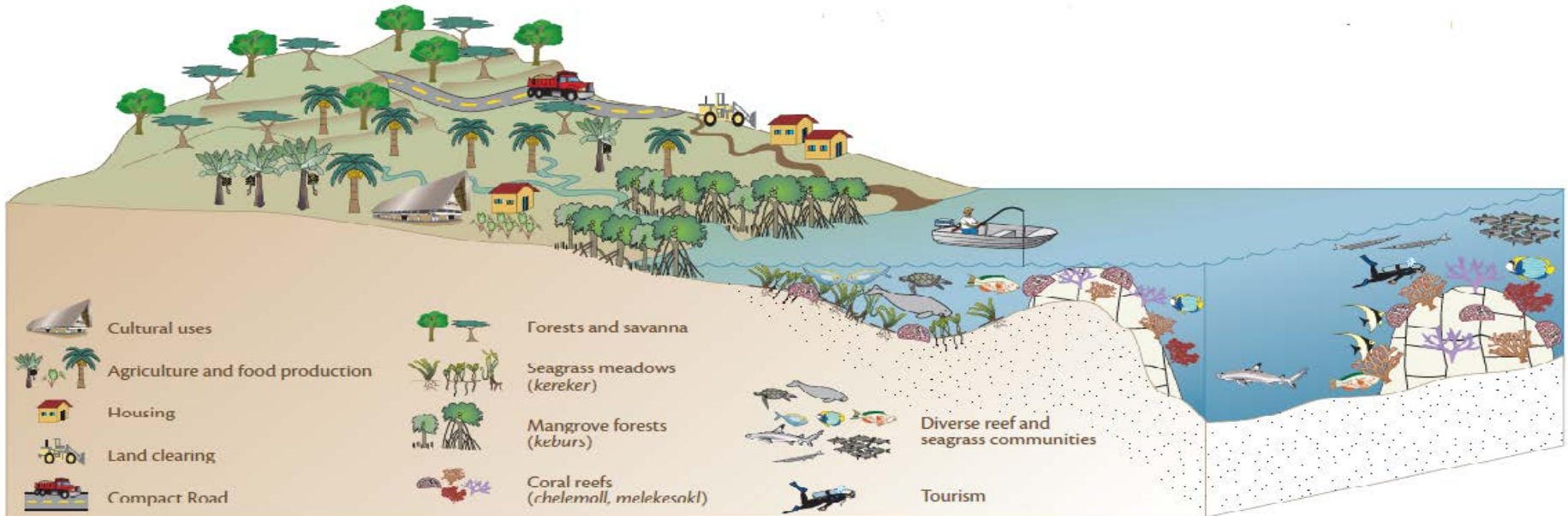
Land-based marine degradation

Results in:

Sedimentation of coral reefs, increase of mangroves edging out to sea grass ecosystems, impacting coral recruitment etc.

Driven by:

Palau's tourism and development sector which is spurring demand in the agriculture sector, housing markets, and hotel development



Addressing this Issue

Utilizing holistic approach

National level– facilitating the development of Palau’s Sustainable Land Management Action Plan.

Local Government level– working with state governments to develop stormwater management plans–

Community level– working with farmers to engage in agro-ecological farming practices



National level SLM efforts: Development and Implementation of SLM Action Plan

- ✓ Palau adopts SLM Policy in 2012 (Policy calls for SLM action plan to address land degradation issues)
 - ✓ 2013 Palau applies to Global Environment Facility (GEF) for funding support to roll out SLM Policy.
 - ✓ 2016 GEF approves and 2017 Palau begins SLM action plan development and other SLM focused actions.
-
- Risks– SLM implementation requires coordination amongst multiple collaborators– No existing agency with mandate to lead coordination of these efforts.
 - Solution– create institutional support for SLM for coordination and for leading efforts
 - Challenges– limited technical expertise (hydrologists, engineers, etc.) on island to provide SLM Action Plan implementation support.



State level (sub-national) efforts: Developing and implementing land and resource use action plans specifically stormwater management and action plans.

- ✓ Focus on specific land use issue because it is more manageable.
 - ✓ Sediment pollution in fresh and marine waters is biggest pollution source in Palau.
 - ✓ Addressing sediment issue is a catalyst for resolving other environmental issues such as siltation in fresh water systems and coral reef degradation.
-
- Risks– plans have a tendency to remain on shelves instead of being implemented.
 - Solution– Build capacity (institutional, personal and financial) of state governments to implement.
 - Challenges– Standard Operating Procedures for stormwater mgmt. measures are needed and training on their application is sorely lacking.



Community level SLM efforts: Working with farmers to engage in agro-ecological farming practices.

- ✓ Two types of farming existing in Palau—traditional taro cultivation in paddy-like fields and dry land farming.
- ✓ Problematic type is dry land farming—most farm lands are on slopes, there is only four inches of topsoil, Palau's rainy climate means farms on slopes contribute to sedimentation problem.
- ✓ Efforts include demonstration of best practices such as contour farming, hedgerows and soil conditioning to minimize soil erosion and sedimentation



- Risk— no incentive to engage in these farming practices
- Solution— make it profitable, farm crops that can meet tourism demand as well as local demand.
- Challenges— limited knowledge of marketing to tourism industry and value added product development



Successful implementation leads towards the achievement of these outcomes

A Multitude of national objectives –

Including: Palau National Action Programme to address land degradation, Palau Protected Areas Network effective management objectives

Regional objectives

Micronesia Challenge– effective management of protected areas

Global objectives–



SDG 14– Life below water–

14.1 By 2025, prevent and significantly reduce marine pollution of all kinds, in particular from land-based activities, including marine debris and nutrient pollution



SDG 15– Life on land

15.3 By 2030, combat desertification, restore degraded land and soil, including land affected by desertification, drought and floods, and strive to achieve a land degradation-neutral world





Kom Kmal Mesulang

Dōmo Arigatō Gozaimashita

